

HIGHLIGHTS OF ONGOING RESEARCH OF THE WORLD AGROFORESTRY CENTRE IN INDONESIA

van Noordwijk, M. and O'Connor, T. (Eds.)

ICRAF Southeast Asia Working Paper 2006_1

Southeast Asia



World Agroforestry Centre
TRANSFORMING LIVES AND LANDSCAPES

**HIGHLIGHTS OF ONGOING RESEARCH OF
THE WORLD AGROFORESTRY CENTRE
IN INDONESIA**

van Noordwijk, M. and O'Connor, T. (Eds.)

ICRAF Southeast Asia Working Paper 2006_1

van Noordwijk, M. and O'Connor, T. (Eds.) Highlights of ongoing research of the world agroforestry centre in Indonesia. ICRAF Southeast Asia Working Paper 2006_1

2005/2006 EPMR

EXTERNAL PROGRAM AND MANAGEMENT REVIEW of the World Agroforestry Centre in Indonesia

© Copyright ICRAF Southeast Asia

Further information please contact:

World Agroforestry Centre

Transforming Lives and Landscapes

ICRAF Southeast Asia Regional Office
Jl. CIFOR, Situ Gede, Sindang Barang, Bogor 16680
PO Box 161, Bogor 16001, Indonesia
Tel: 62 251 625415, fax: 62 251 625416
Email: icraf-indonesia@cgiar.org
ICRAF Southeast Asia website: <http://www.icraf.cgiar.org/sea> or
<http://www.worldagroforestrycentre.org/sea>

Text layout: Tikah Atikah

Disclaimer

This text is a 'working paper' reflecting research results obtained in the framework of ICRAF Southeast Asia project. Full responsibility for the contents remains with the authors.

CONTENT

AGENDA	1
Simulation and appraisal tools connecting trees, plots, farmers and landscapes	3
Tree establishment and growth in agroforests (<i>Laxman Joshi</i>)	7
• The SEXI-FS Spatially explicit individual-tree-based agroforest simulator applied to rubber agroforests (<i>Degi Harja</i>)	7
• Forest tree regeneration in rubber agroforests in Jambi: influences of landscape context? (<i>Saida Rasnovi</i>).....	7
• Mycorrhiza requirements of Dipterocarp trees for agroforests: shifting paradigms (<i>Hesti Tata</i>).....	7
Agroforestation of grasslands (<i>Jim Roshetko</i>)	20
• Tree-site matching analysis as part of the Smallholder Agro-Forestry on Degraded Soils (SAFODS) project in Indonesia and the Philippines (<i>Betha Lusiana</i>).....	20
• WaNuLCAS validity tests on SAFODS data and exploration of scenarios for converting Imperata landscapes to tree-based systems (<i>Ni'matul Khasanah</i>)	20
• FALLOW explorations of baselines and leakage for Clean Development Mechanism proposals (<i>Desi Suyamto</i>).....	20
Watershed functions in landscape mosaics (<i>Meine van Noordwijk</i>).....	37
• Local ecological knowledge of critical watershed functions: methods for exploring local logic (<i>Elok Mulyoutami</i>)	37
• Participatory landscape appraisal (PALA) in the context of critical watershed functions (<i>Rudi Widodo</i>).....	37
• Water detectives: watershed monitoring in northern Thailand (<i>video – David Thomas and Pornwilai Saipothong</i>).....	37
Biodiversity of landscape mosaics (<i>Jean-Laurent Pfund</i>)	45
• Rapid agrobiodiversity appraisal in the context of environmental service rewards RABA (<i>Susilo Ady Kuncoro</i>).....	45
• Birds in a coffee agroforestry landscape (<i>Trudy O'Connor</i>)	45
• Management styles for rubber agroforests: tradeoff between profitability and biodiversity? (<i>Gede Wibawa</i>).....	45

Poverty, benefit flows, conflicts and improved governance of agroforestry landscapes 56

**Poverty mapping, farming systems and forest margins in Indonesia
(*Suseno Budidarsono*) 56**

- Poverty mapping approaches (*Sonya Dewi*) 56
- Spatial analysis of farming systems and forest margins in Indonesia (*Danan Hadi*) 56
- Orangutan conservation without tenure conflicts? (*Gerhard Manurung*) 56

Multiscale negotiation support for community based forest management (*Chip Fay*) 70

- Evolution of the negotiation support system in Lampung (*Gamal Pasya*) 70
- Impact analysis of HKM implementation (*Suyanto*) 70
- Gender aspects of HKM in Sumberjaya (*Novi Khususiyah*) 70

Economic analysis of agroforestry (*Suyanto*) 84

- Applications of the Policy Analysis Matrix tool for appraisal of agroforestry systems
(*Suseno Budidarsono*) 84
- Who controls and benefits from tambaks in Aceh (*Indra/Suseno*) 84
- Rapid market opportunity appraisal (*Joel Tukan/Jim Roshetko*) 84

Rewards for environmental services (*Sonya Dewi*) 107

- How much sedimentation control can be bought in Sumber Jaya: a designed experiment
(*Beria Leimona*) 107
- Typology of environmental services and reward mechanisms (*Meine van Noordwijk*) 107

AGENDA

EPMR site visit to Indonesia

Dr. Ken Brooks

- Monday 23 – Wednesday 25 January: Sumber Jaya (Lampung) to visit ASB/RUPES site
- Thursday morning January 26 (8.30 - 12.30) Bulangan room CIFOR building

Simulation and appraisal tools connecting trees, plots, farmers and landscapes

8.45 - 9.00	Introduction and overview	Meine van Noordwijk
9.00 - 9.45	Tree establishment and growth in agroforests	Laxman Joshi
	<ul style="list-style-type: none">- The SEXI-FS Spatially explicit individual-tree-based agroforest simulator applied to rubber agroforests (Degi Harja)- Forest tree regeneration in rubber agroforests in Jambi: influences of landscape context? (Saida Rasnovi)- Mycorrhiza requirements of Dipterocarp trees for agroforests: shifting paradigms (Hesti Tata)	
	=> Discussion	
9.45 - 10.00	Coffee break	
10.00 - 10.45	Agroforestation of grasslands	Jim Roshetko
	<ul style="list-style-type: none">- Tree-site matching analysis as part of the Smallholder Agro-Forestry on Degraded Soils (SAFODS) project in Indonesia and the Philippines (Betha Lusiana)- WaNuLCAS validity tests on SAFODS data and exploration of scenarios for converting Imperata landscapes to tree-based systems (Ni'matul Khasanah)- FALLOW explorations of baselines and leakage for Clean Development Mechanism proposals (Desi Suyamto)	
	=> Discussion	
10.45 - 11.30	Watershed functions in landscape mosaics	Meine van Noordwijk
	<ul style="list-style-type: none">- Local ecological knowledge of critical watershed functions: methods for exploring local logic (Elok Mulyoutami)- Participatory landscape appraisal (PALA) in the context of critical watershed functions (Rudi Widodo)- Rapid Hydrological function Appraisal (RHA) and the next steps for RUPES Lake Singkarak (Kevin Jeanes)	
	=> Discussion	

- 11.30 - 12.15** **Biodiversity of landscape mosaics** **Jean-Laurent Pfund**
- Rapid agrobiodiversity appraisal in the context of environmental service rewards RABA (Susilo Ady Kuncoro)
 - Birds in a coffee agroforestry landscape (Trudy O'Connor)
 - Management styles for rubber agroforests: tradeoff between profitability and biodiversity? (Gede Wibawa)
- => Discussion
- 12.15 - 12.30** **General discussion and reflection on the approach used** **Meine van Noordwijk**

- Friday morning January 27 (8.30 - 12.00) Bulangan room CIFOR building

Poverty, benefit flows, conflicts and improved governance of agroforestry landscapes

- 8.45 - 9.00 Introduction and overview Chip Fay
- 9.00 - 9.45** **Poverty mapping, farming systems and forest margins in Indonesia** **Suseno Budidarsono**
- Poverty mapping approaches (Sonya Dewi)
 - Spatial analysis of farming systems and forest margins in Indonesia (Danan Hadi)
 - Rapid tenure claim appraisal tool (Gamma Galudra)
- => Discussion
- 9.45 - 10.00** **Coffee break**
- 10.00 - 10.45** **Multiscale negotiation support for community based forest management** **Chip Fay**
- Evolution of the negotiation support system in Lampung (Gamal Pasya)
 - Impact analysis of HKM implementation (Suyanto)
 - Gender aspects of HKM in Sumberjaya (Novi Khususiyah)
- => Discussion
- 10.45 - 11.30** **Economic analysis of agroforestry** **Suyanto**
- Applications of the Policy Analysis Matrix tool for appraisal of agroforestry systems (Suseno Budidarsono)
 - Who controls and benefits from tambaks in Aceh (Indra)
 - Rapid market opportunity appraisal (Joel Tukan)
- => Discussion
- 11.30 - 12.00** **Rewards for environmental services** **Sonya Dewi**
- How much sedimentation control can be bought in Sumber Jaya: a designed experiment (Beria Leimona)
 - Typology of environmental services and reward mechanisms (Meine van Noordwijk)
- 11.50 - 12.00** **General discussion and reflection on the approach used** **Chip Fay**

Simulation and appraisal tools connecting trees, plots, farmers and landscapes

2005/2006 External Program and Management Review (EPMR) of the World Agroforestry Centre (ICRAF)

External Program and Management Review (EPMR) site visit to Indonesia: Dr. Ken Brooks

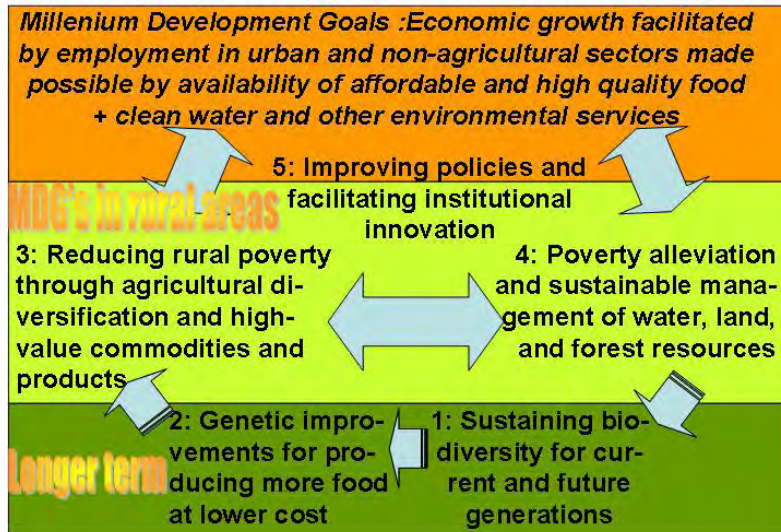
- Monday 23 – Wednesday 25 January: Sumber Jaya (Lampung) to visit ASB/RUPES site
- Thursday January 26: Simulation and appraisal tools connecting trees, plots, farmers and landscapes
- Friday January 27: Poverty, benefit flows, conflicts and improved governance of agroforestry landscapes

It has been more than 7 years since the previous EPMR visit and the ICRAF program in Indonesia has evolved further: more sites, more young scientists and less ‘international’ ones, more policy and development linkage; we hope to maintain focus, cohesiveness, salience and quality....

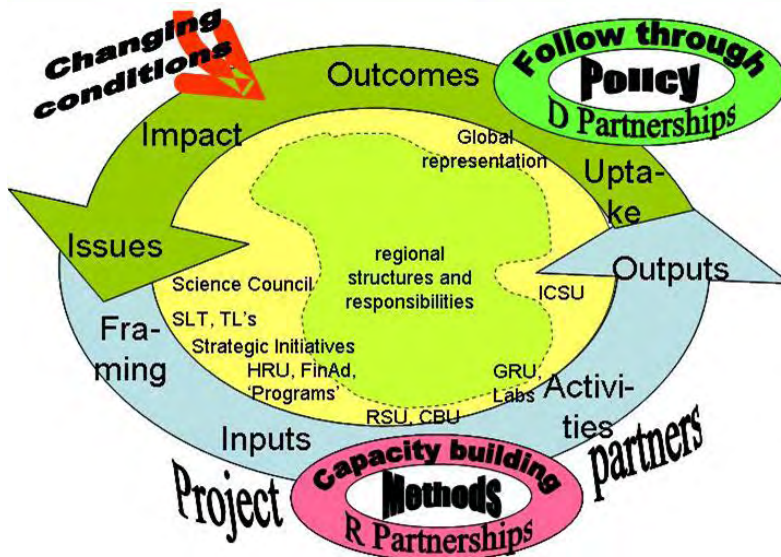


Introduction to ICRAF South East Asia – Meine van Noordwijk
“Our work is linking trees to farms, agroforestry farms to their landscape context and consequences, and landscapes with farmers to the governance systems and external stakeholders that shape them”

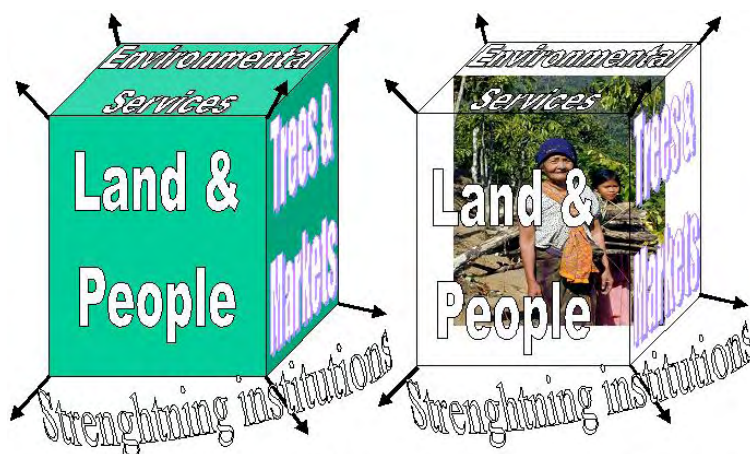
Science priorities for CGIAR



“All our work is directly linked to the CGIAR science priorities, and thus linked to the Millennium Development Goals. We support multifunctional landscapes that provide food & clean water to urban poor, income and local services for rural poor and conserve resources for future harvests.”



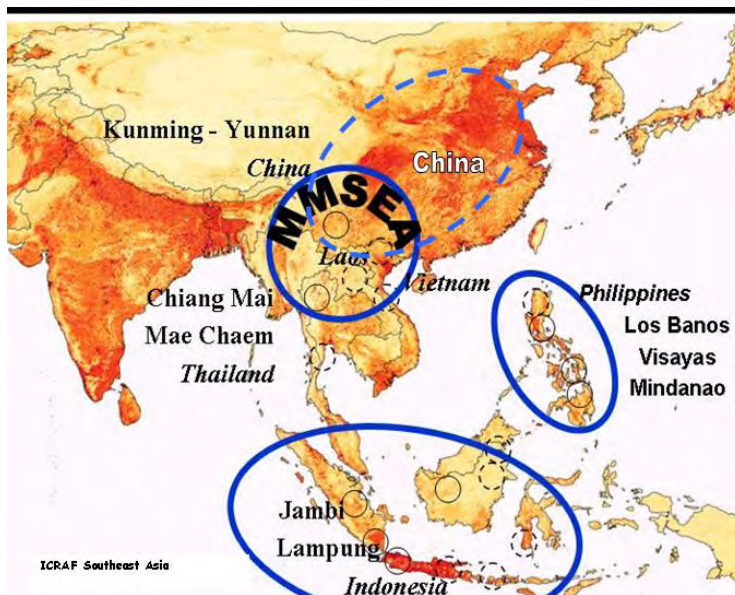
“All our activities are aimed at research support for development – starting from the identification (“framing”) of issues, through activities with partners, and the outputs we produce, we have the uptake and outcomes in mind, and gear towards ‘impact’ on poverty and environment.”



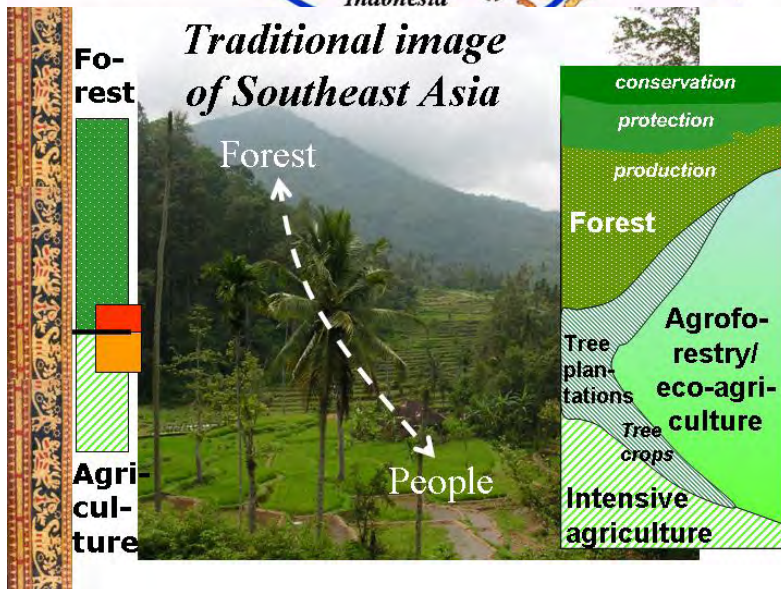
The four global themes of the World Agroforestry Centre defining the sides of a cube and trying to expand the cube

Meanwhile, the reality of our target beneficiaries and partners is **inside** this cube, integrating it all

“To provide some internal structure to all these activities, ICRAF has globally recognized four thematic areas – which connect like the sides of a cube + efforts to expand the box (cube). In fact, however, the real agroforesters of the world are inside the cube, integrating all aspects. Our themes are not ‘divisions’.”



“South East Asia + China is home to a higher number of poor people than all of Africa combined – but fortunately the overall growth offers real hope for poverty reduction. Population density (colour on the map) varies in our region from <10 to >1000 persons km⁻², and this significantly influences agroforestry issues.”



“While the traditional image of South East Asia landscapes has forest on the hills and people/ agriculture in the lowlands, in fact we deal with a gradient in tree density within agroforestry; the institutions for Forestry & Agriculture involve an artificial and unnecessary split”



“Our work therefore tries to reach across four systems: trees, farms, landscapes and governance. At each level we explore the components, focus on the human dimension and consider the cross-scale linkages; this makes for 4 * 3 regional focal areas”



The site visit to Sumber Jaya (Lampung, Sumatra) looked at the way research on trees, plots, farms and landscapes is integrated with development support based on conflict management, rewards for environmental services and diversifying coffee farms. *Integration* is the key word.

Simulation and appraisal tools connecting trees, plots, farmers and landscapes

Introduction and overview (Meine van Noordwijk)

Tree establishment and growth in agroforests (Laxman Joshi)

- The SEXI-FS Spatially explicit individual-tree-based agroforest simulator (Degi Harja)
- Forest tree regeneration in rubber agroforests in Jambi (Saida Rasnovi)
- Mycorrhiza requirements of Dipterocarp trees for agroforests (Hesti Tata)

Agroforestation of grasslands (Jim Roshetko)

- Tree-site matching analysis as part of the Smallholder Agro-Forestry on Degraded Soils (SAFODS) project in Indonesia and the Philippines (Betha Lusiana)
- WaNuLCAS validity tests on SAFODS data and exploration of scenarios for converting Imperata landscapes to tree-based systems (Ni'matul Khasanah)
- FALLOW explorations of baselines and leakage for Clean Development Mechanism proposals (Desi Suyanto)

Watershed functions in landscape mosaics (Meine)

- Local ecological knowledge of critical watershed functions: methods (Elok Mulyoutami)
- Participatory landscape appraisal (PALA) of critical watershed functions (Rudi Widodo)
- Water detectives: watershed monitoring in northern Thailand (video – David Thomas and Pornwilai Saipothong)

Biodiversity of landscape mosaics (Jean-Laurent Pfund)

- Rapid agrobiodiversity appraisal in the context of environmental service rewards (Ilo Kuncoro)
- Birds in a coffee agroforestry landscape (Trudy O'Connor)
- Management styles for rubber agroforests: tradeoff between profitability and biodiversity? (Gede Wibawa)

“In today’s seminar we will provide some highlights of the work that has a primarily ecological/ agronomic orientation, while tomorrow the focus is on socio-economic issues. As you will see, however, it is difficult and not very useful to keep the two apart...”